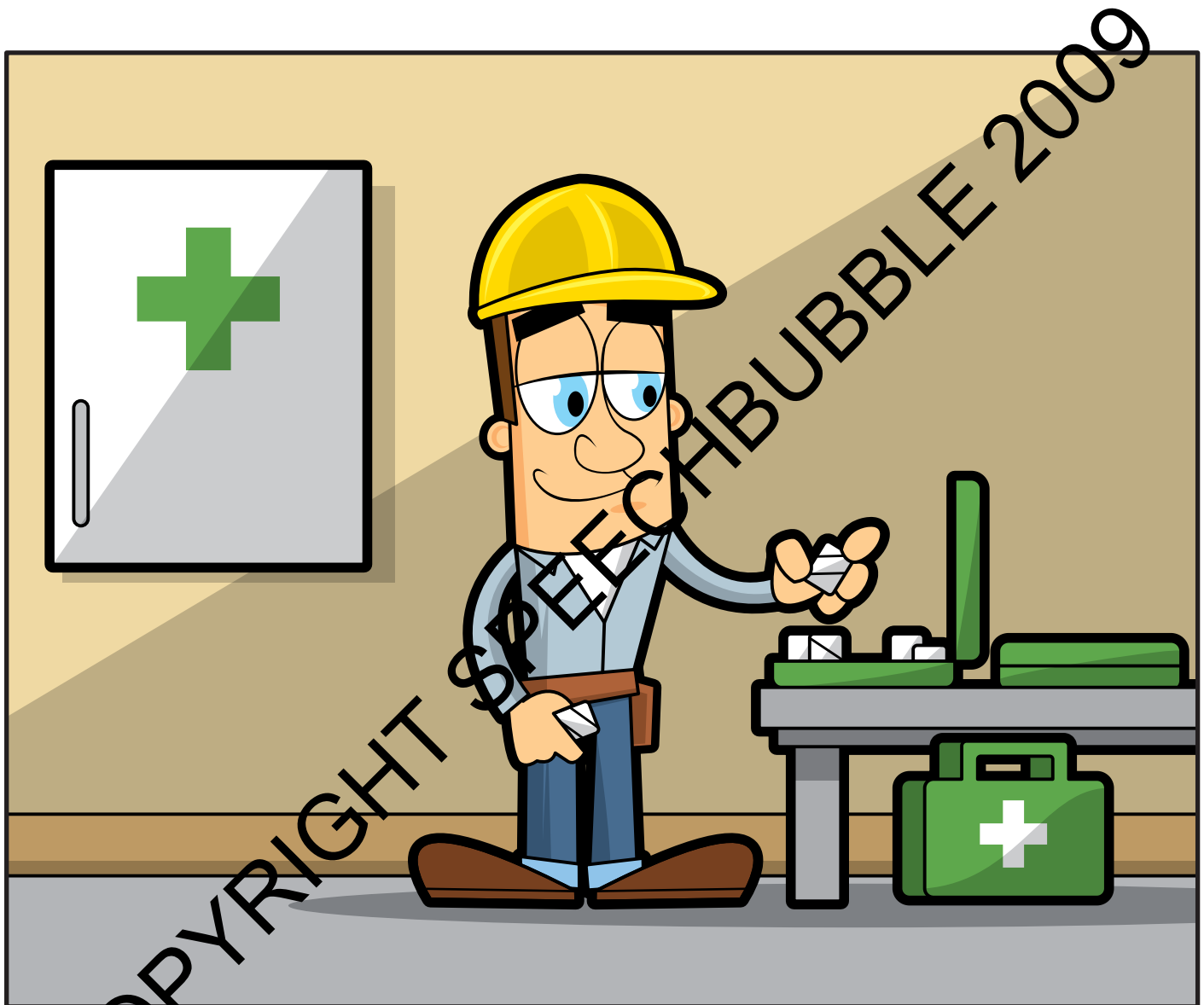


SAFETY TALK 12

First Aid



Introduction

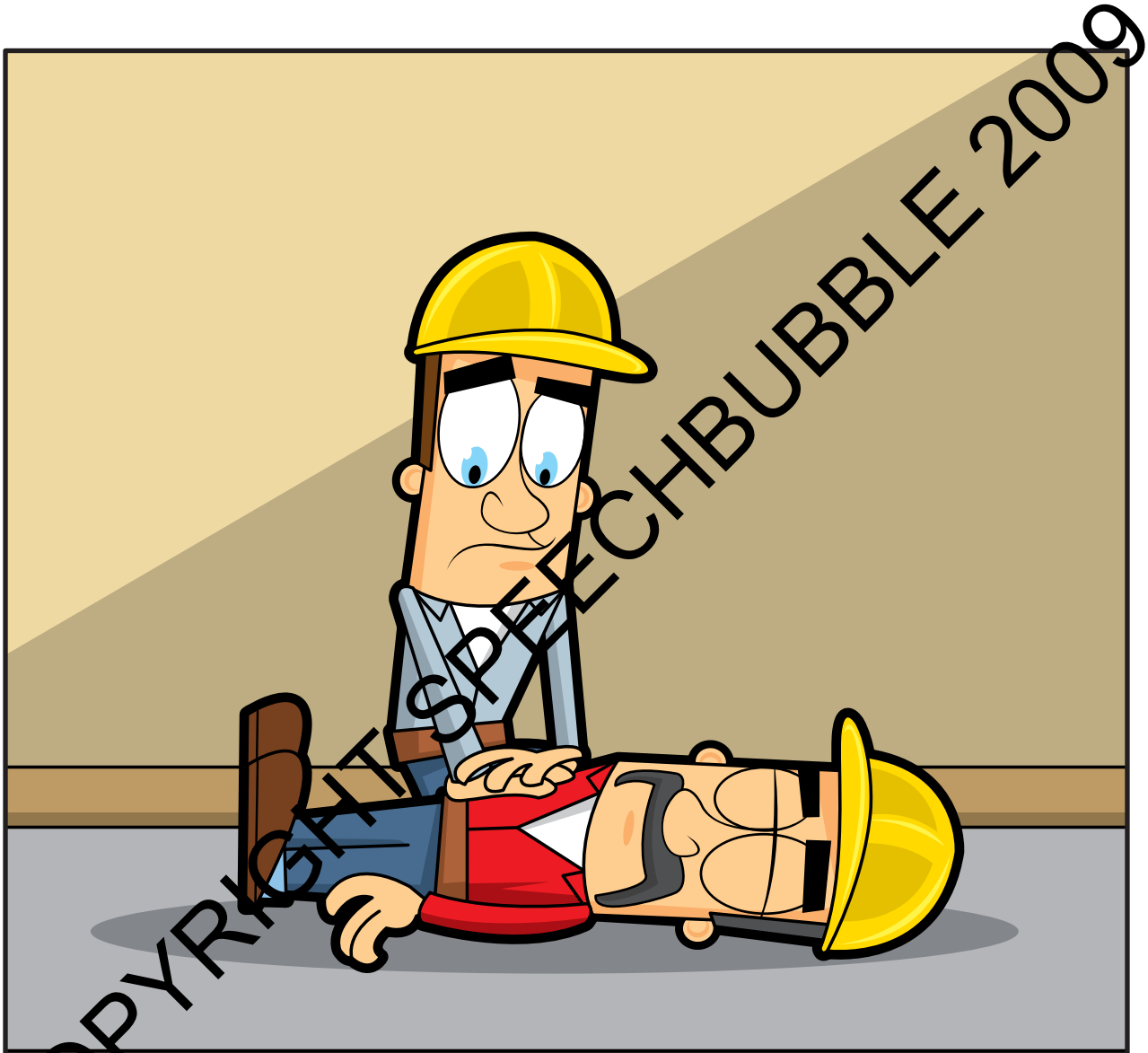
- The priorities of First Aid are to save life, prevent the casualty's condition from getting worse and to evacuate to medical help as soon as possible

SAFETY AWARENESS SAVES LIVES

www.speechbubble.ie

SAFETY TALK 12

First Aid



Main points:

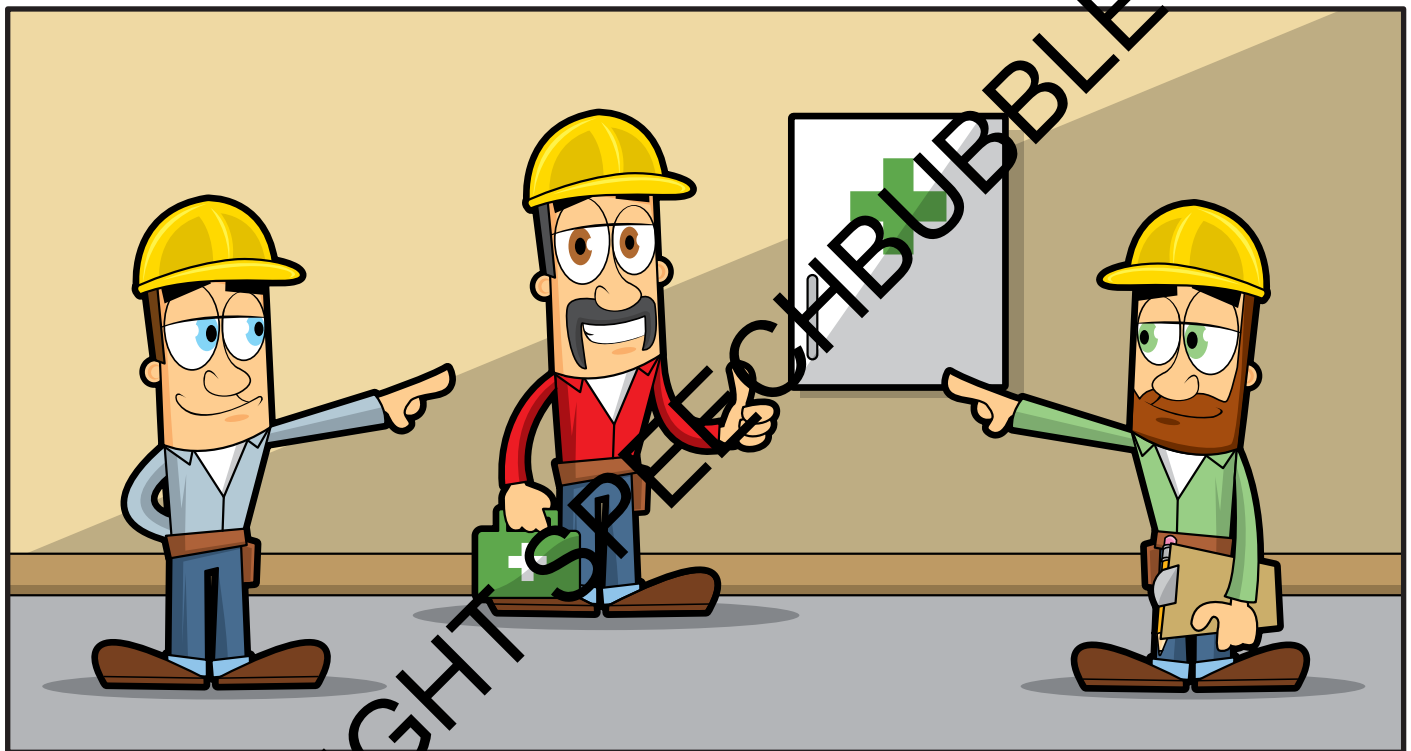
- If you know basic First Aid you could save a life.

SAFETY AWARENESS SAVES LIVES

www.speechbubble.ie

SAFETY TALK 12

First Aid



Main points:

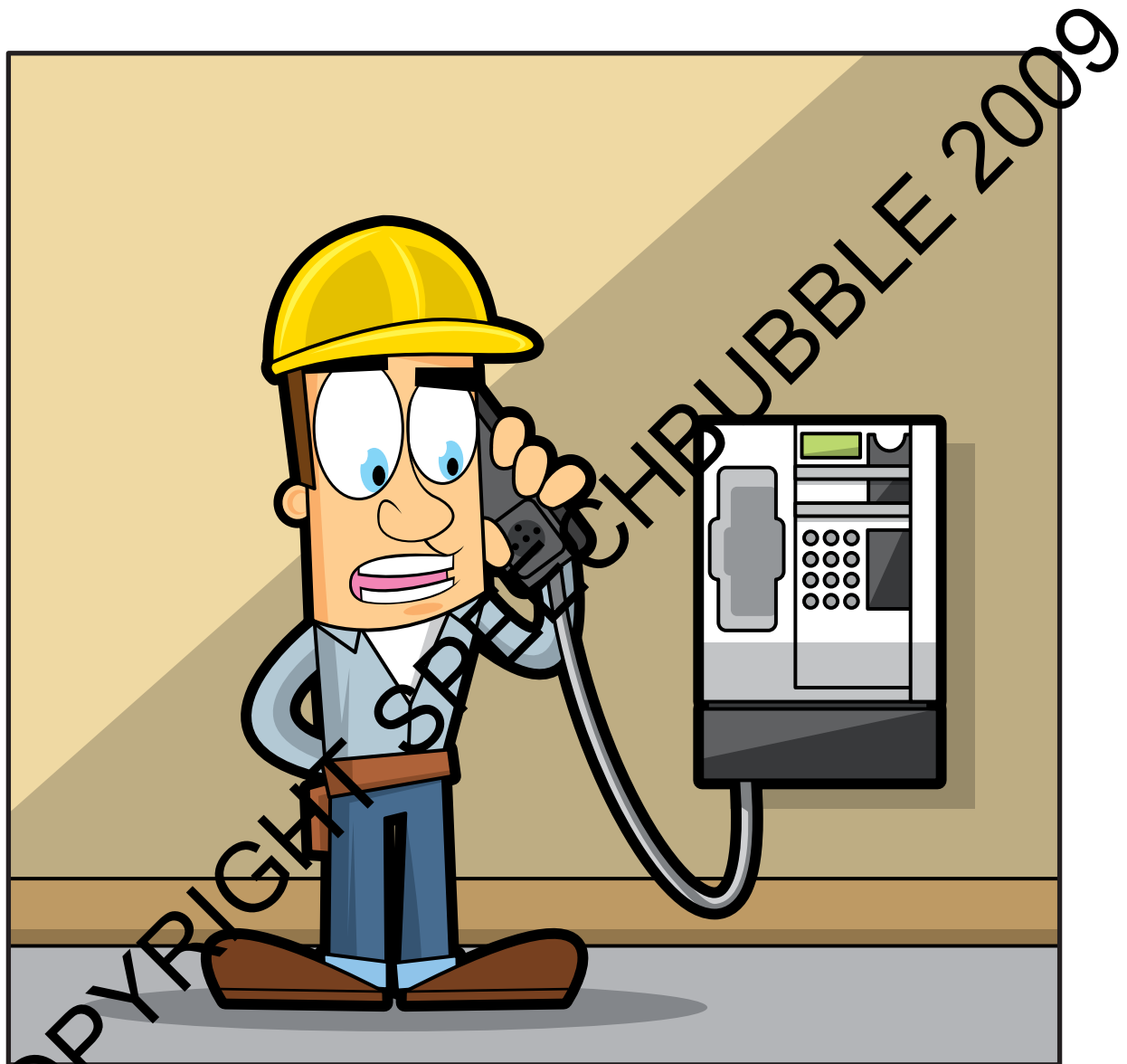
- Everyone should know where the First Aid kit is kept and who the appointed persons trained in First Aid are.

SAFETY AWARENESS SAVES LIVES

www.speechbubble.ie

SAFETY TALK 12

First Aid



Main points:

- Everyone should know where the phone is and understand the procedure for calling the emergency services.

SAFETY AWARENESS SAVES LIVES

www.speechbubble.ie

SAFETY TALK 12

First Aid



Other points to consider

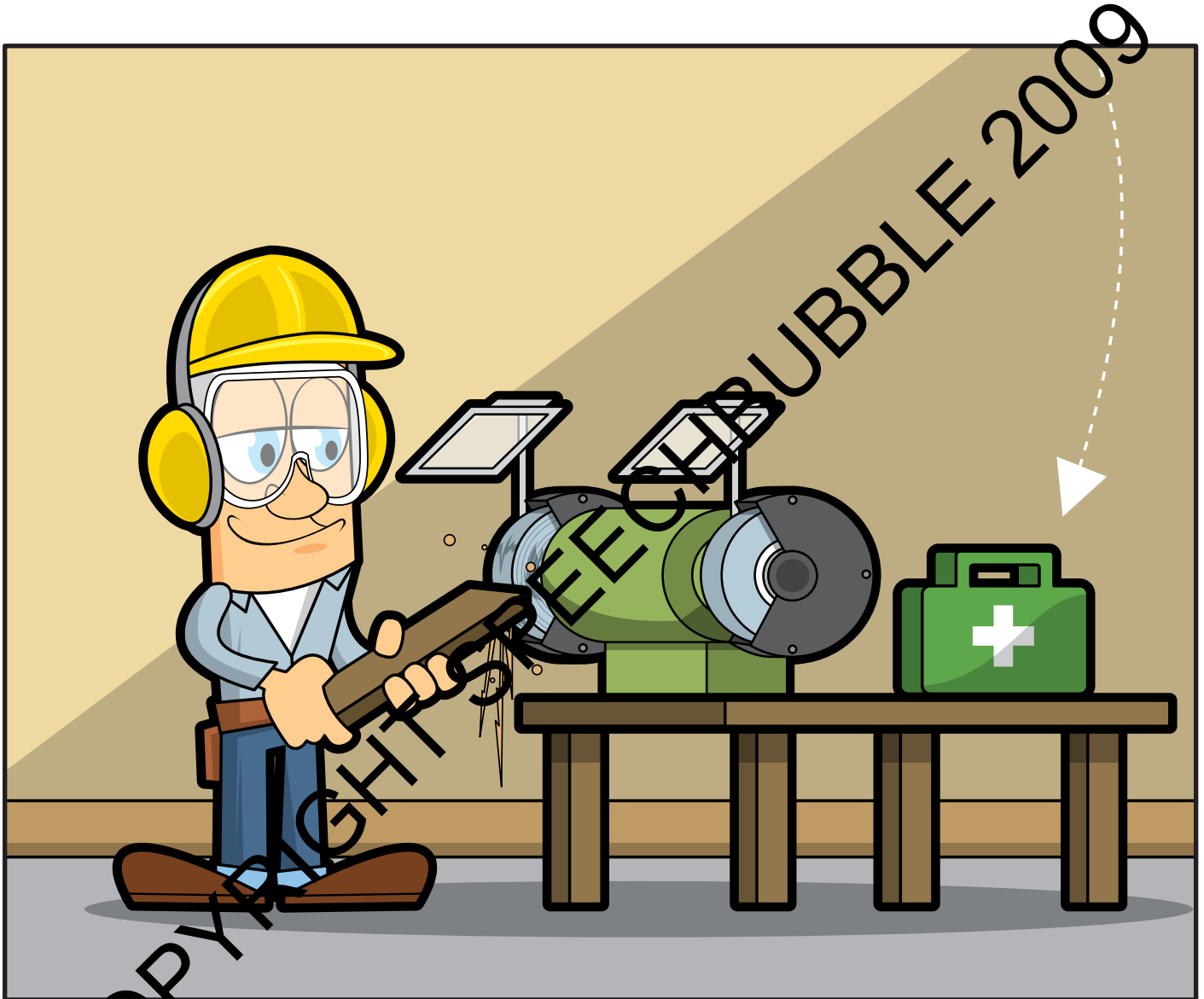
- You must have a small travelling first aid kit if you are working in a small group away from the main site.

SAFETY AWARENESS SAVES LIVES

www.speechbubble.ie

SAFETY TALK 12

First Aid



Other points to consider

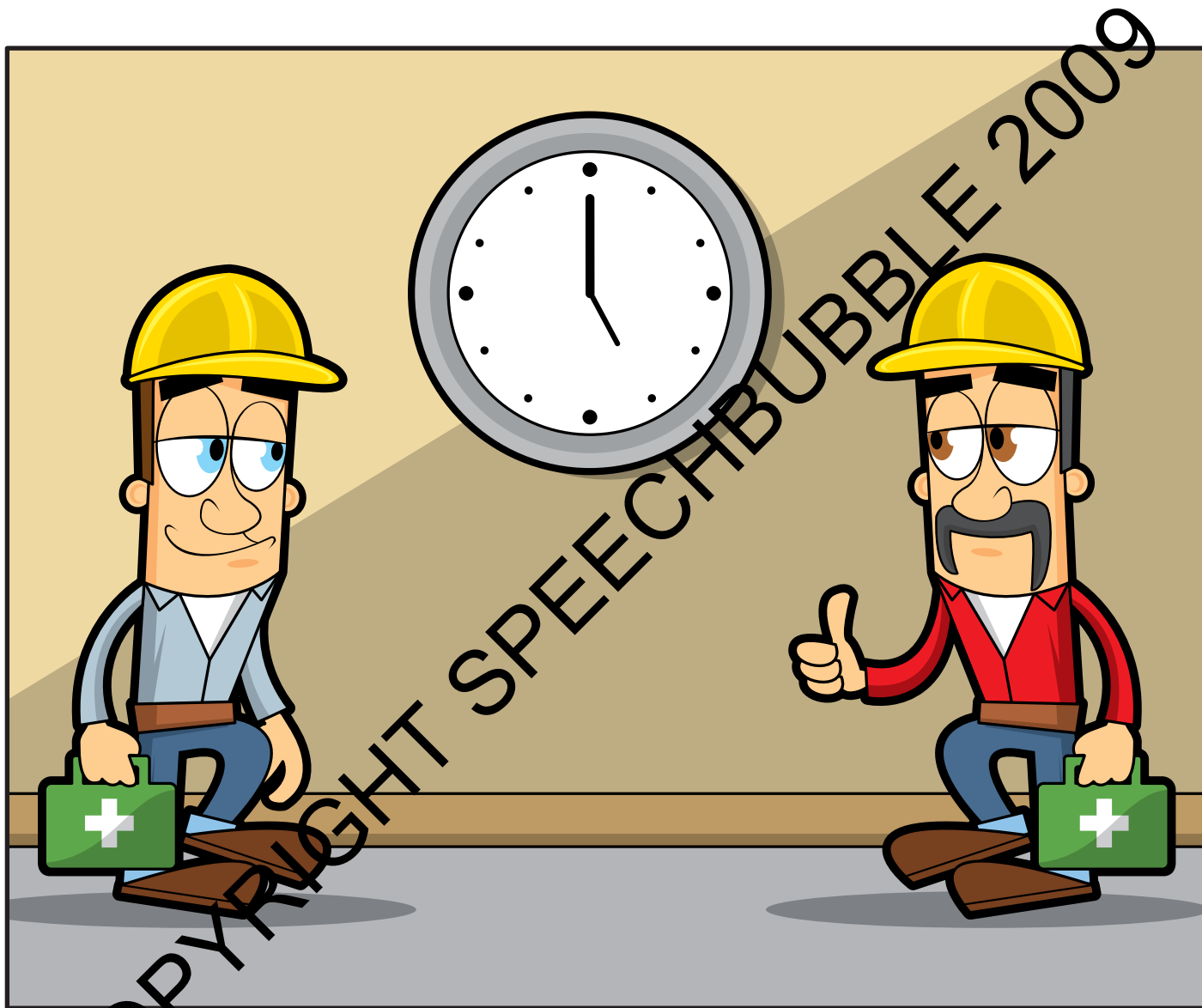
- You must also have a small travelling first aid kit if you are using potentially dangerous tools or machinery.

SAFETY AWARENESS SAVES LIVES

www.speechbubble.ie

SAFETY TALK 12

First Aid



Other points to consider

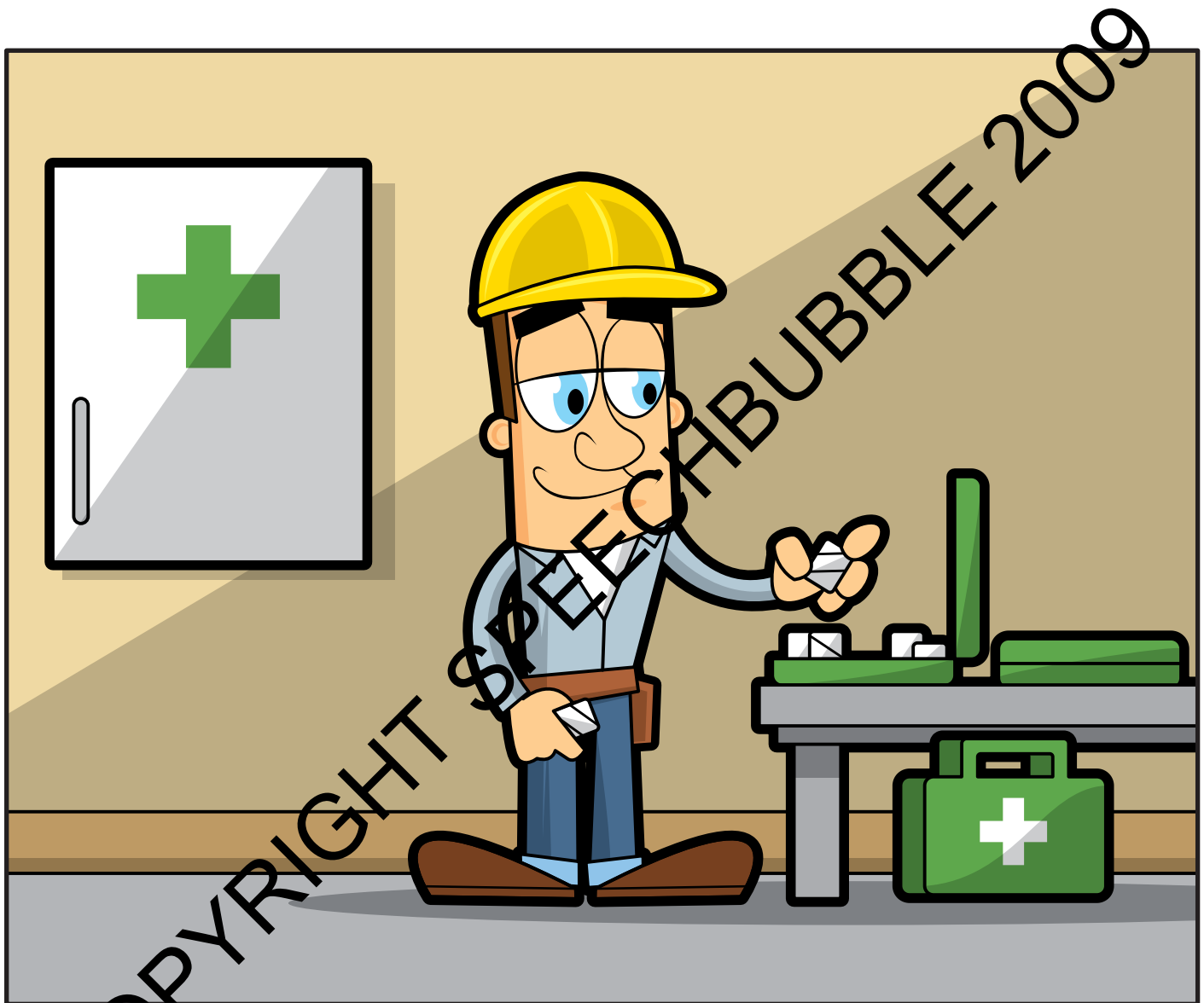
- First aid cover must include shift work, holiday cover etc.

SAFETY AWARENESS SAVES LIVES

www.speechbubble.ie

SAFETY TALK 12

First Aid



Other points to consider

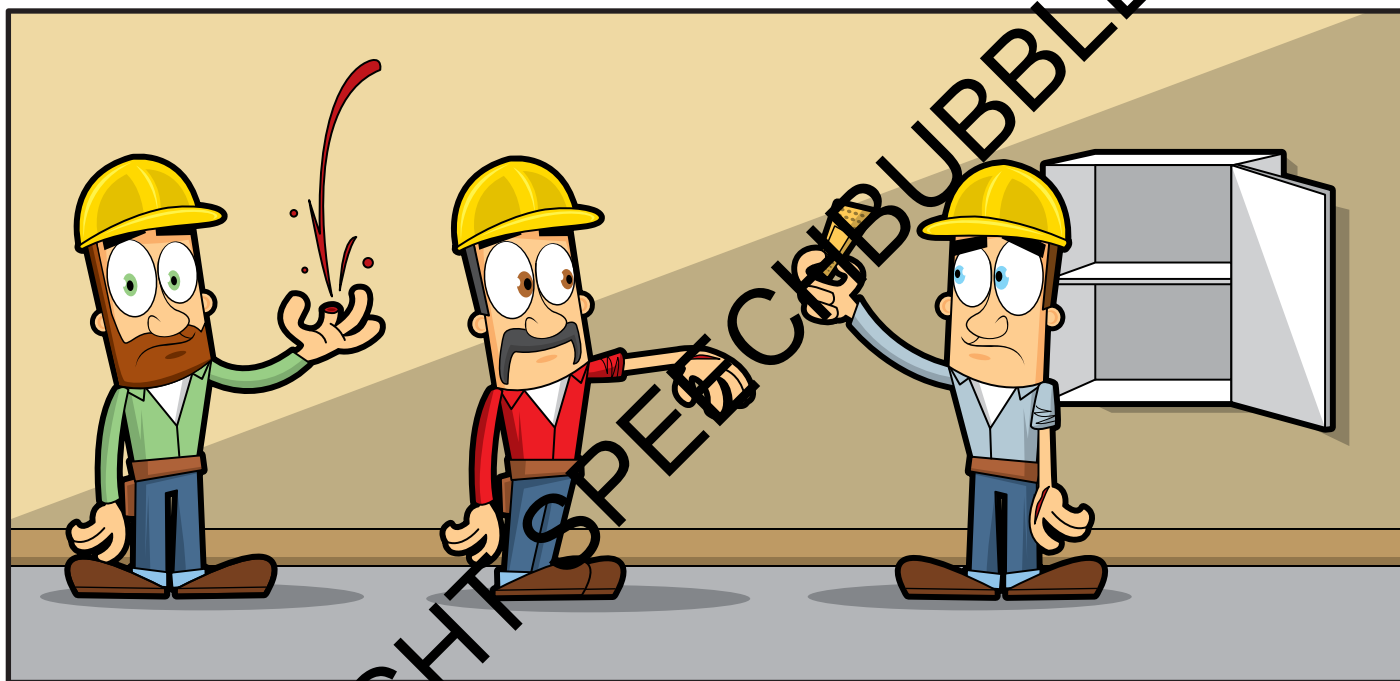
- Someone must have responsibility for restocking first aid boxes.

SAFETY AWARENESS SAVES LIVES

www.speechbubble.ie

SAFETY TALK 12

First Aid



Other points to consider

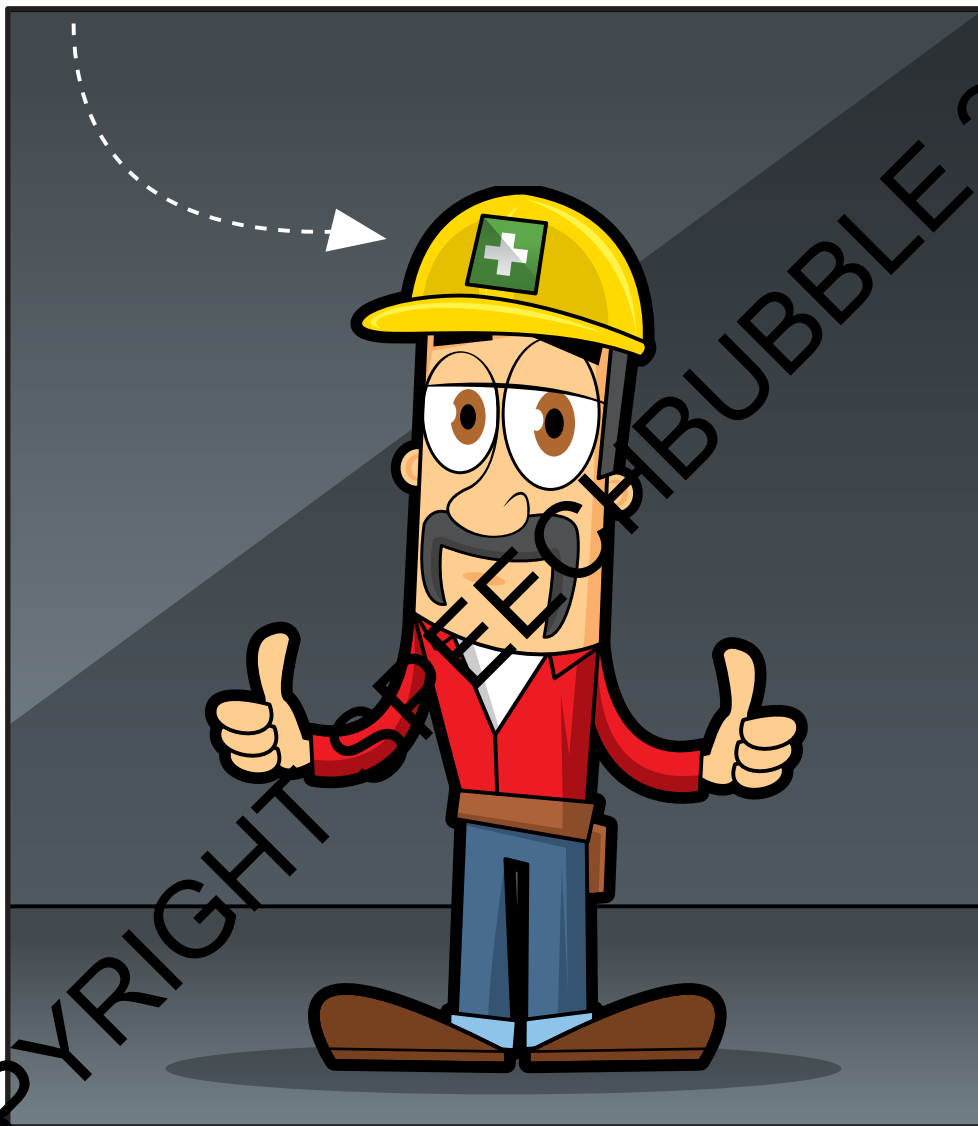
- The First Aid equipment provided must be suitable for the nature of the work and the number of operatives.

SAFETY AWARENESS SAVES LIVES

www.speechbubble.ie

SAFETY TALK 12

First Aid



Other points to consider

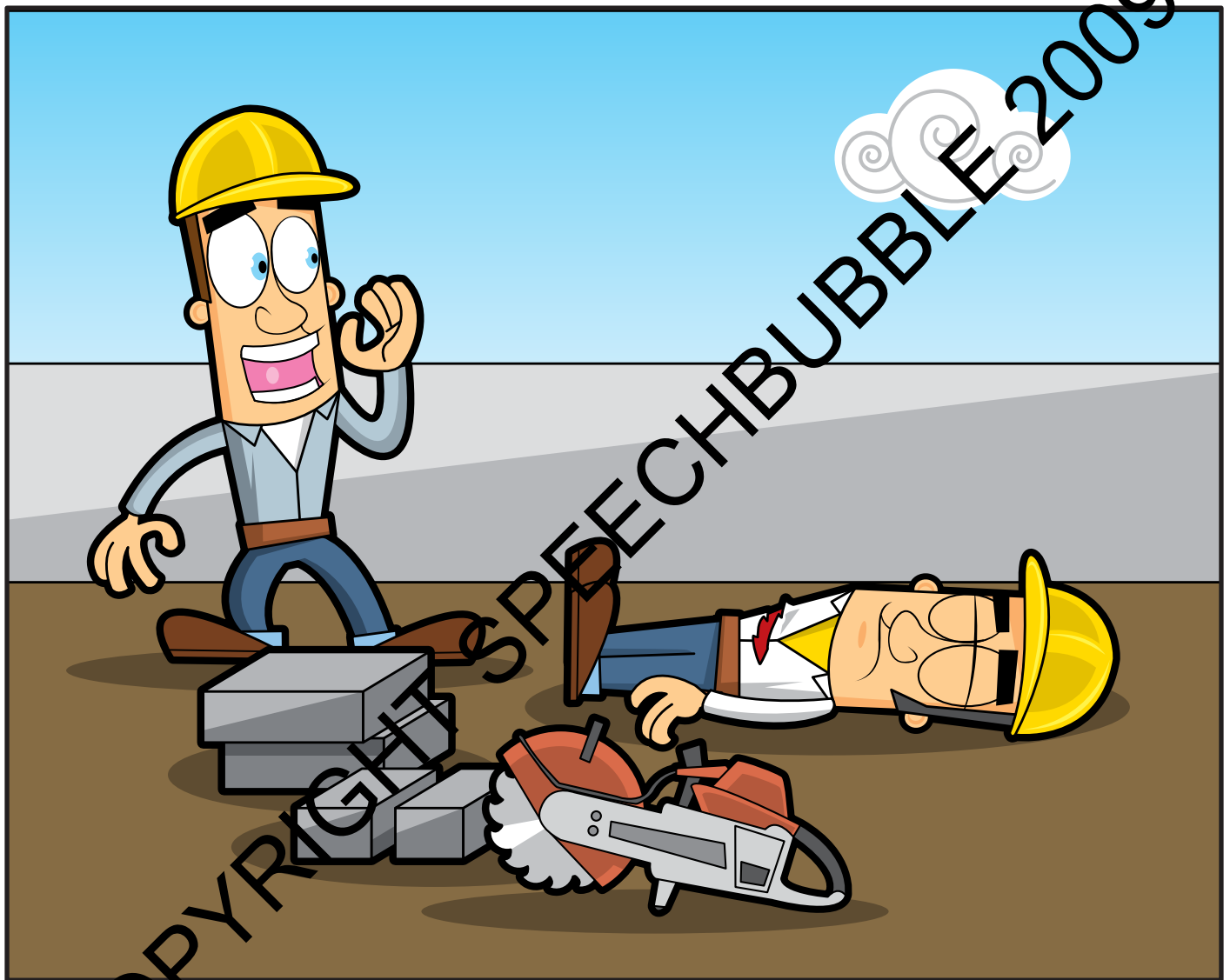
- Appointed first-aiders should be easy to identify, usually by a sticker on a safety helmet.

SAFETY AWARENESS SAVES LIVES

www.speechbubble.ie

SAFETY TALK 12

First Aid



Other points to consider

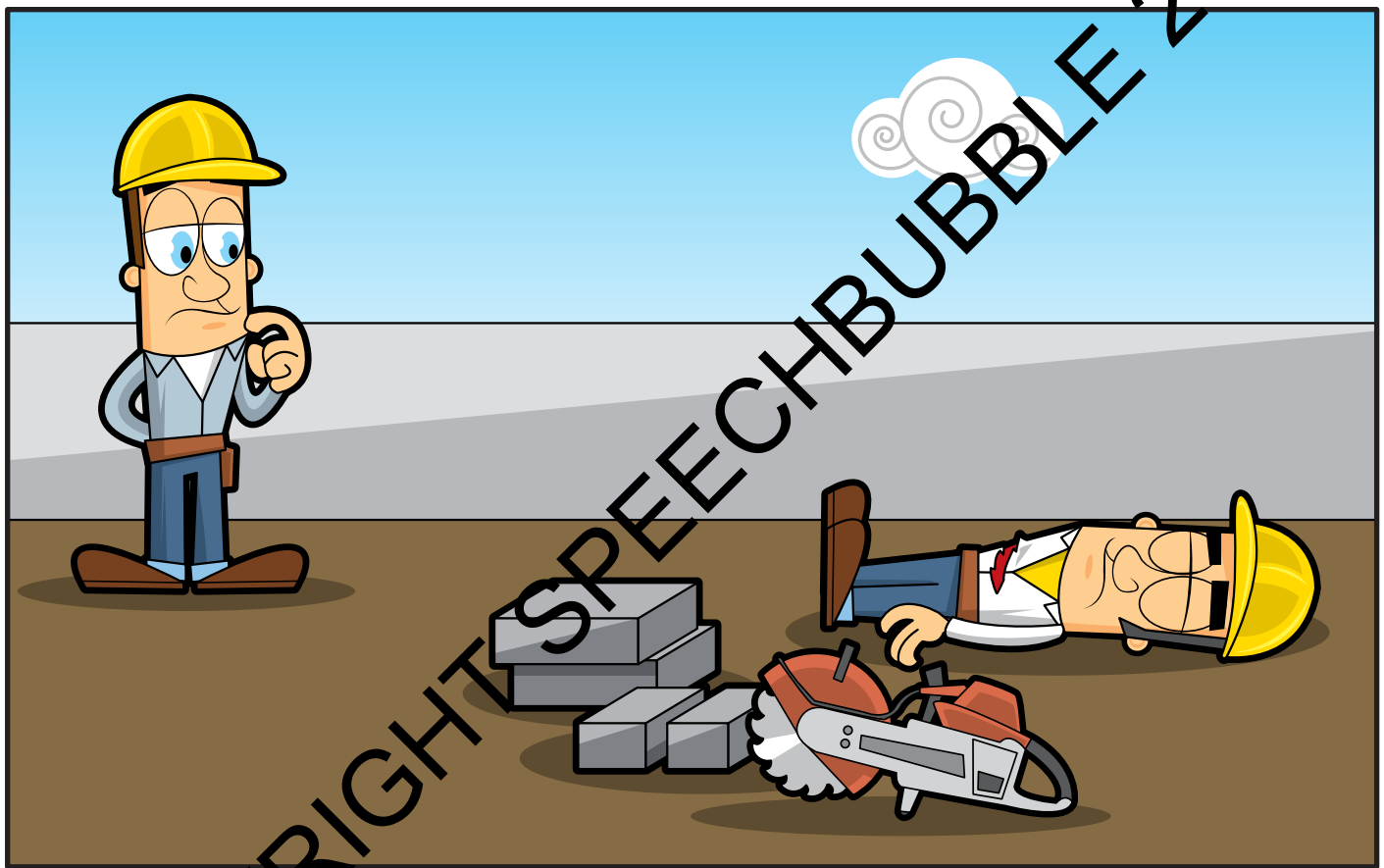
- Action to take when discovering a casualty
 1. Call for medical help e.g. a first-aider.

SAFETY AWARENESS SAVES LIVES

www.speechbubble.ie

SAFETY TALK 12

First Aid



Other points to consider

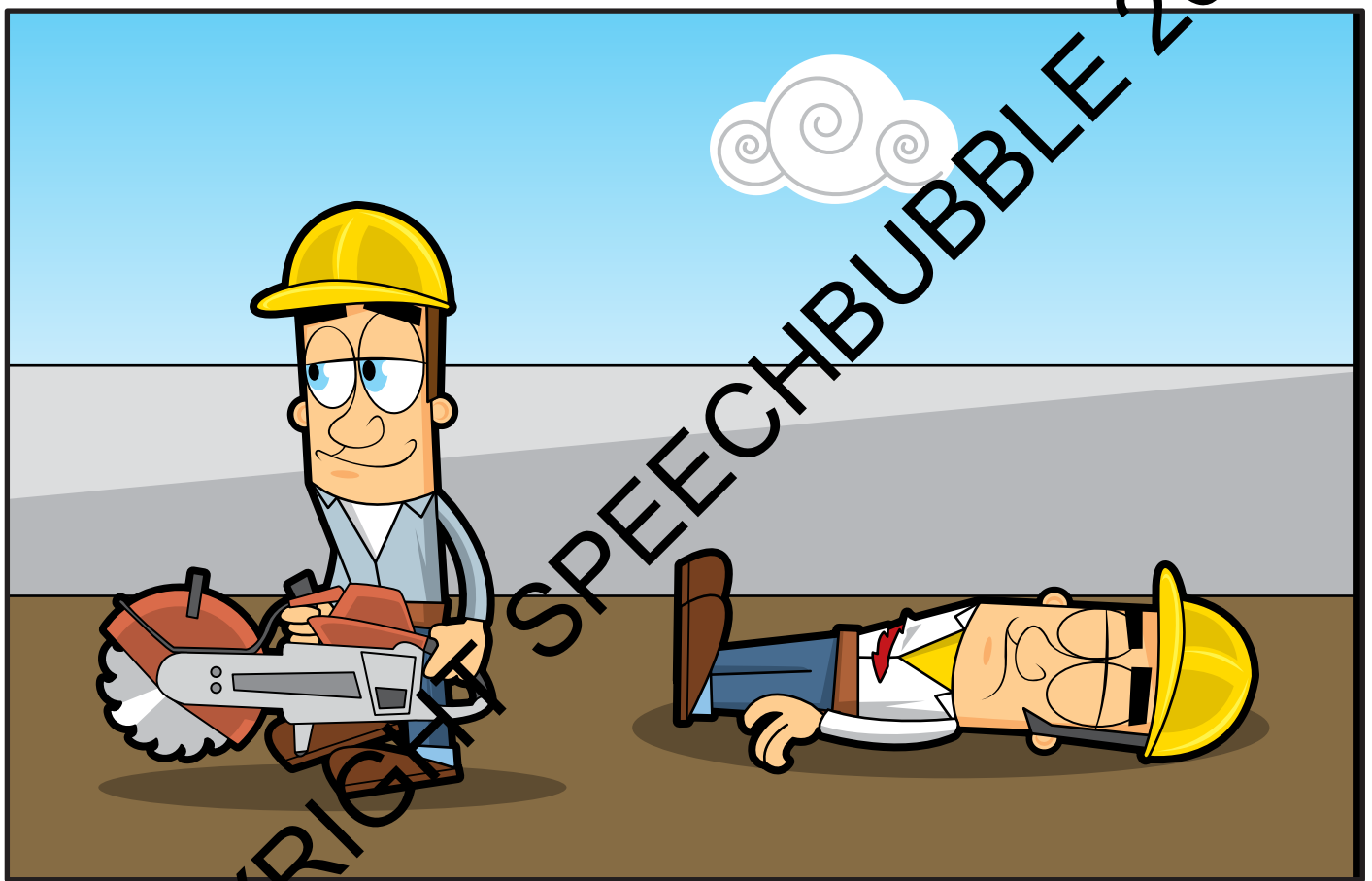
- 2. Ensure your own safety as you approach the casualty.

SAFETY AWARENESS SAVES LIVES

www.speechbubble.ie

SAFETY TALK 12

First Aid



Other points to consider

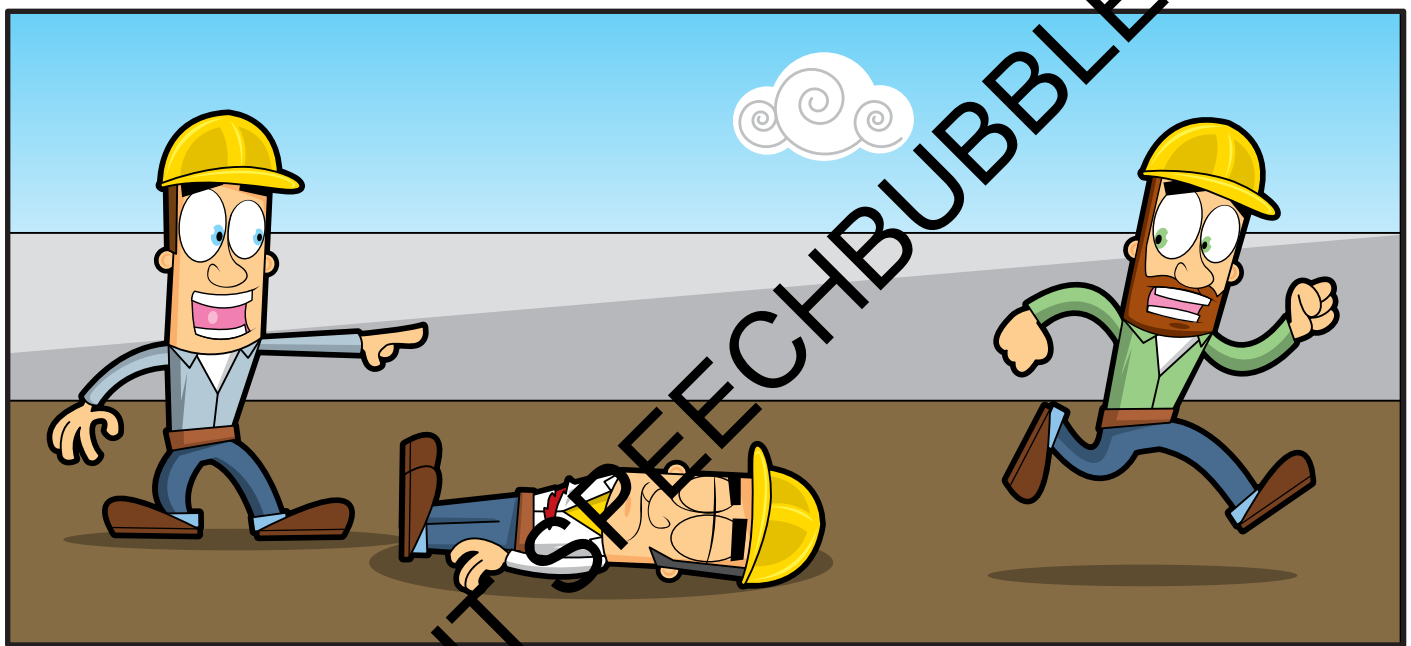
- 3. Remove the hazard from the casualty if safe to do so.

SAFETY AWARENESS SAVES LIVES

www.speechbubble.ie

SAFETY TALK 12

First Aid



Other points to consider

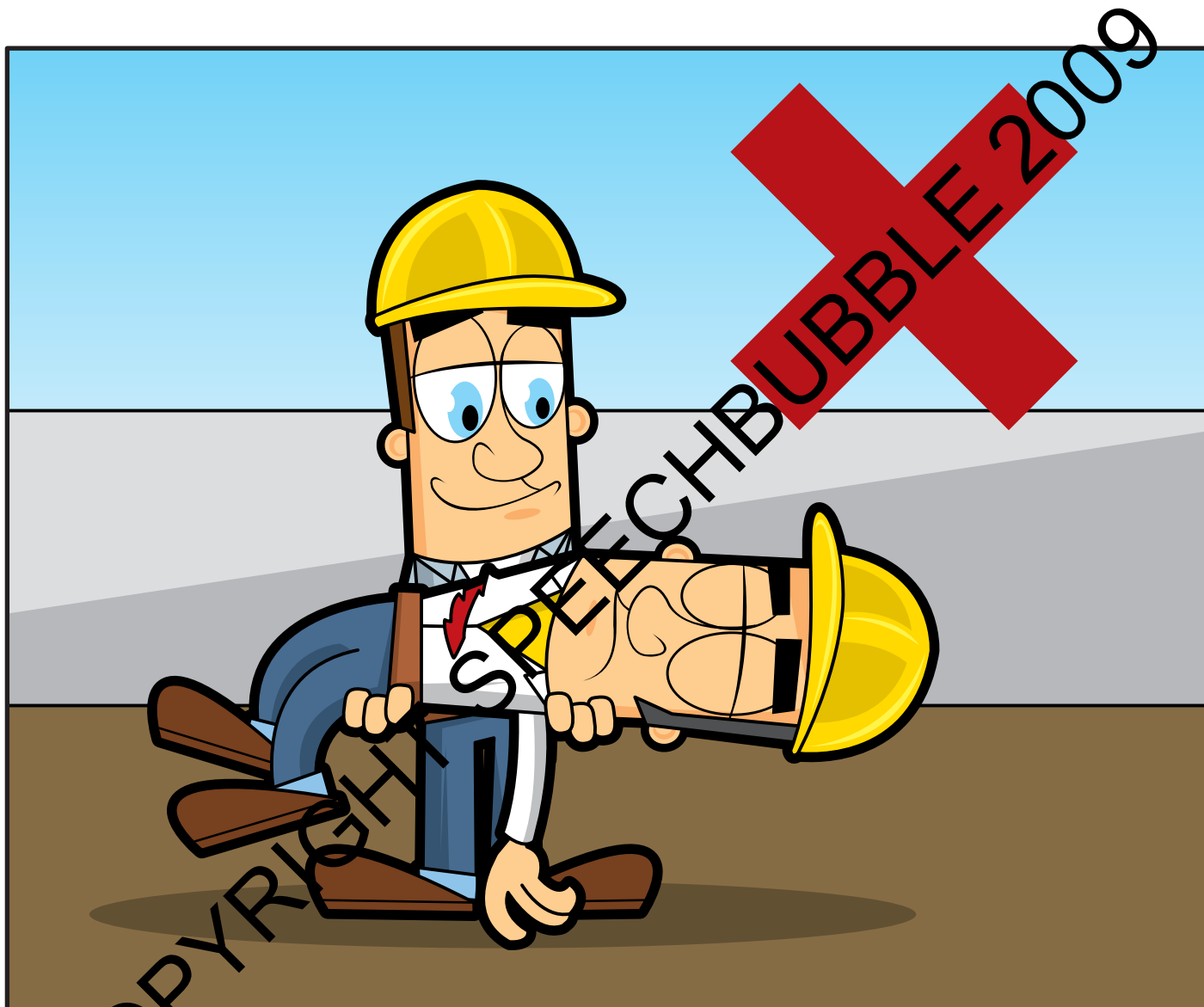
- 4. Send someone to phone for an ambulance, if necessary.

SAFETY AWARENESS SAVES LIVES

www.speechbubble.ie

SAFETY TALK 12

First Aid



Other points to consider

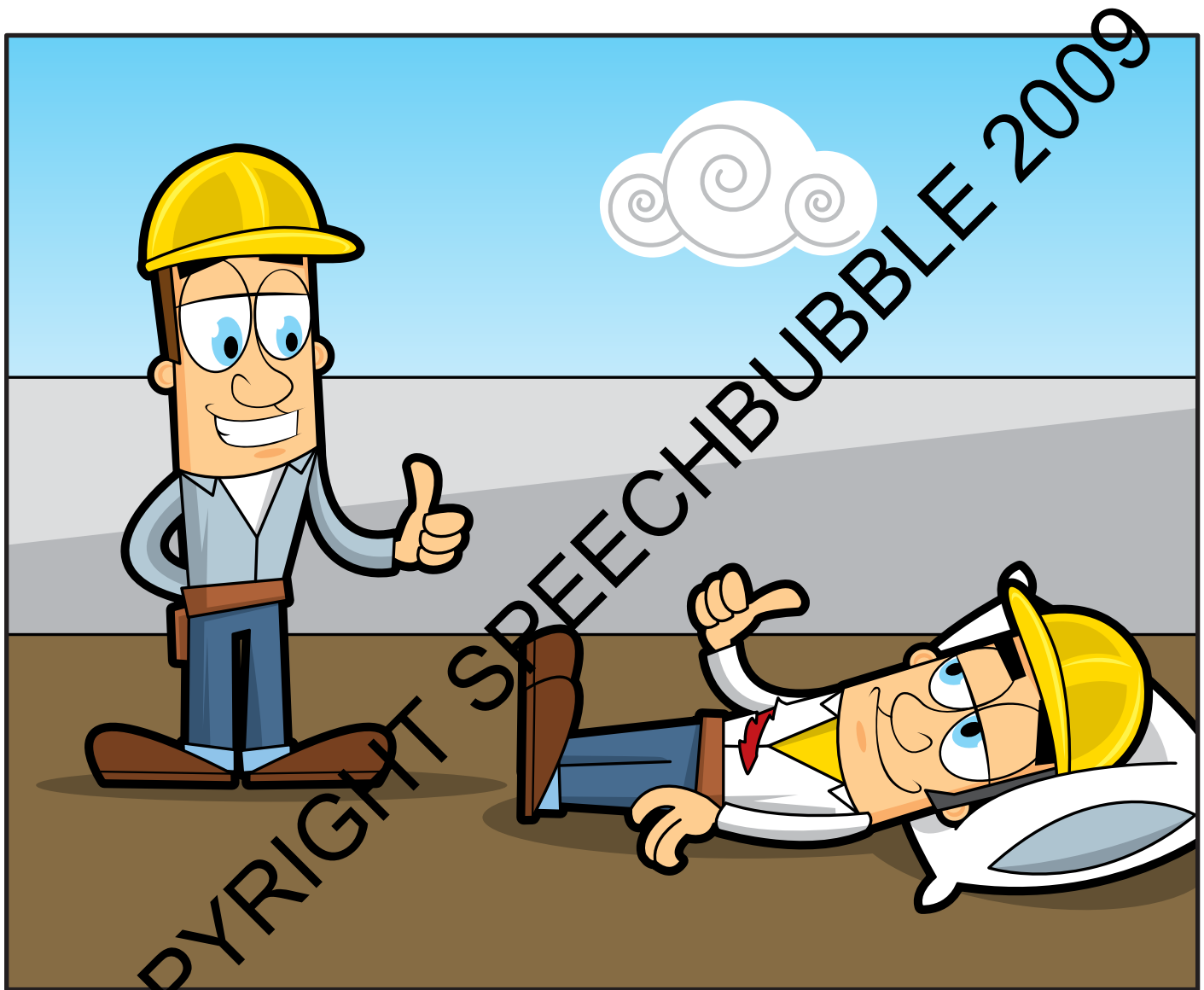
- 5. Don't move the casualty, unless they are in immediate danger.

SAFETY AWARENESS SAVES LIVES

www.speechbubble.ie

SAFETY TALK 12

First Aid



Other points to consider

- 6. Remain with the casualty and give reassurance.

SAFETY AWARENESS SAVES LIVES

www.speechbubble.ie

SAFETY TALK 12

First Aid



Other points to consider

- 7. Make the casualty as comfortable as possible.

SAFETY AWARENESS SAVES LIVES

www.speechbubble.ie

SAFETY TALK 12

First Aid



Other points to consider

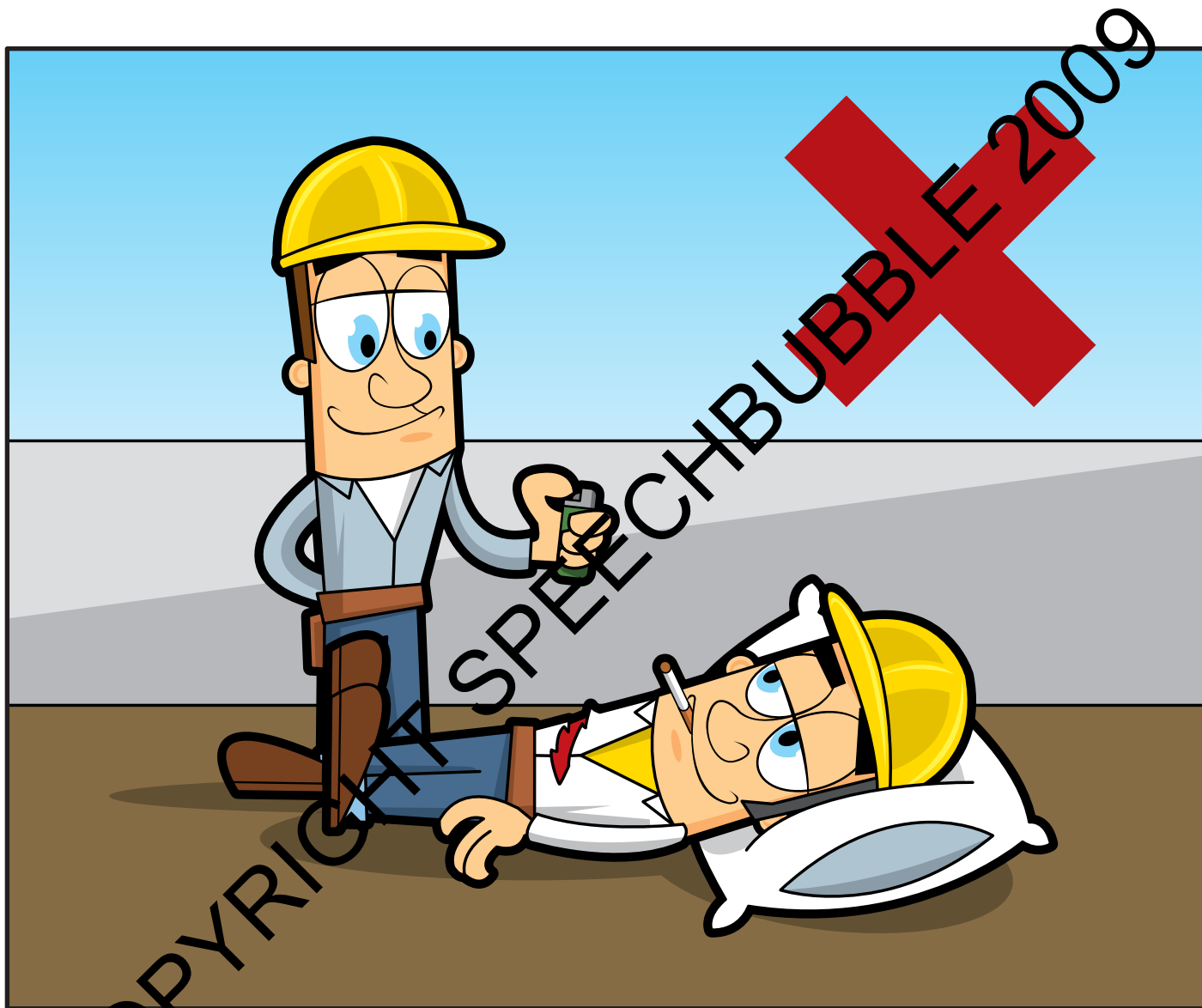
- 8. Don't give drinks or food to the casualty - moisten lips only.

SAFETY AWARENESS SAVES LIVES

www.speechbubble.ie

SAFETY TALK 12

First Aid



Other points to consider

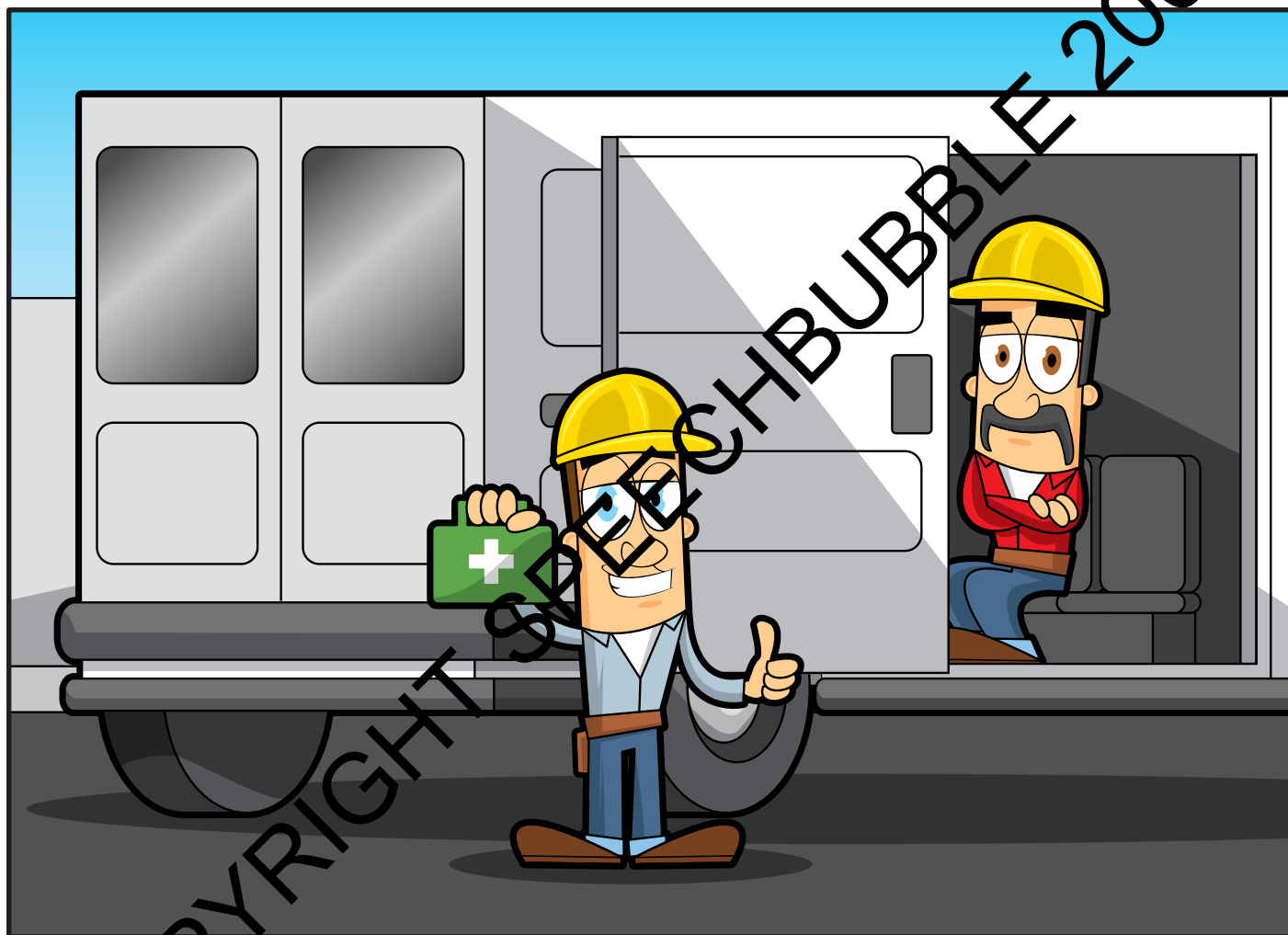
- 9. Don't allow the casualty to smoke.

SAFETY AWARENESS SAVES LIVES

www.speechbubble.ie

SAFETY TALK 12

First Aid



Other points to consider

- It may be a good idea to do some first aid training so that you will know how to stop major bleeding, treat burns or resuscitate a casualty.

SAFETY AWARENESS SAVES LIVES

www.speechbubble.ie

ASSESSMENT SHEET

First Aid

Using the assessment sheet.

This short assessment is designed to give your trainer an idea of how well you have understood the safety talk. The following will help.

- 1) It is a multiple choice assessment – no written answers are required.
- 2) Please complete the assessment, in the time allotted, by placing an 'x' in the box next to the answer you consider to be the most correct.
- 3) Read the question and the answers carefully before making your selection.
- 4) Only give one answer to each question. There will be a most correct answer in each case.

COPYRIGHT SPEECHBUBBLE 2009

ASSESSMENT SHEET

First Aid

Qu 1. Which of the following is most correct? The priorities of First Aid are,

- (a) to maintain a good safety record.
- (b) to save life.
- (c) to stop the event from reoccurring.

Qu 2. Which of the following is most correct? If you know basic First Aid you could,

- (a) improve your job prospects.
- (b) save the company money.
- (c) save a life.

Qu 3. Which of the following is most correct? Everyone should know,

- (a) how to resuscitate a casualty.
- (b) where the first aid kit is kept.
- (c) how to treat a flesh wound.

Qu 4. Which of the following is most correct? Everyone should know,

- (a) who the local doctor is.
- (b) who the appointed first aid persons are.
- (c) who the drivers are.

Qu 5. Which of the following must first aid cover include?

- (a) lunch breaks.
- (b) Christmas and New Year.
- (c) shift work.

ASSESSMENT SHEET

First Aid

Qu 6. Which of the following is most correct? Appointed First Aid Workers are usually identifiable by,

- (a) a white coat.
- (b) a sticker on their safety helmet.
- (c) a first aid kit.

Qu 7. Which of the following is most correct? When attending a casualty, you should not,

- (a) move the casualty unless they are in immediate danger.
- (b) call an ambulance.
- (c) moisten their lips.

Qu 8. Which of the following is most correct? Accidents and near misses should be,

- (a) treated as a lucky escape.
- (b) investigated to find out what went wrong.
- (c) recorded for future reference.

Qu 9. Which of the following is most correct? First Aid equipment should be,

- (a) kept in a locked cupboard.
- (b) sufficient and adequate for the number of operatives.
- (c) kept near the most hazardous jobs.

Qu 10. Which of the following is most correct? First Aid boxes must be kept,

- (a) in a safe place.
- (b) adequately restocked.
- (c) in good condition.